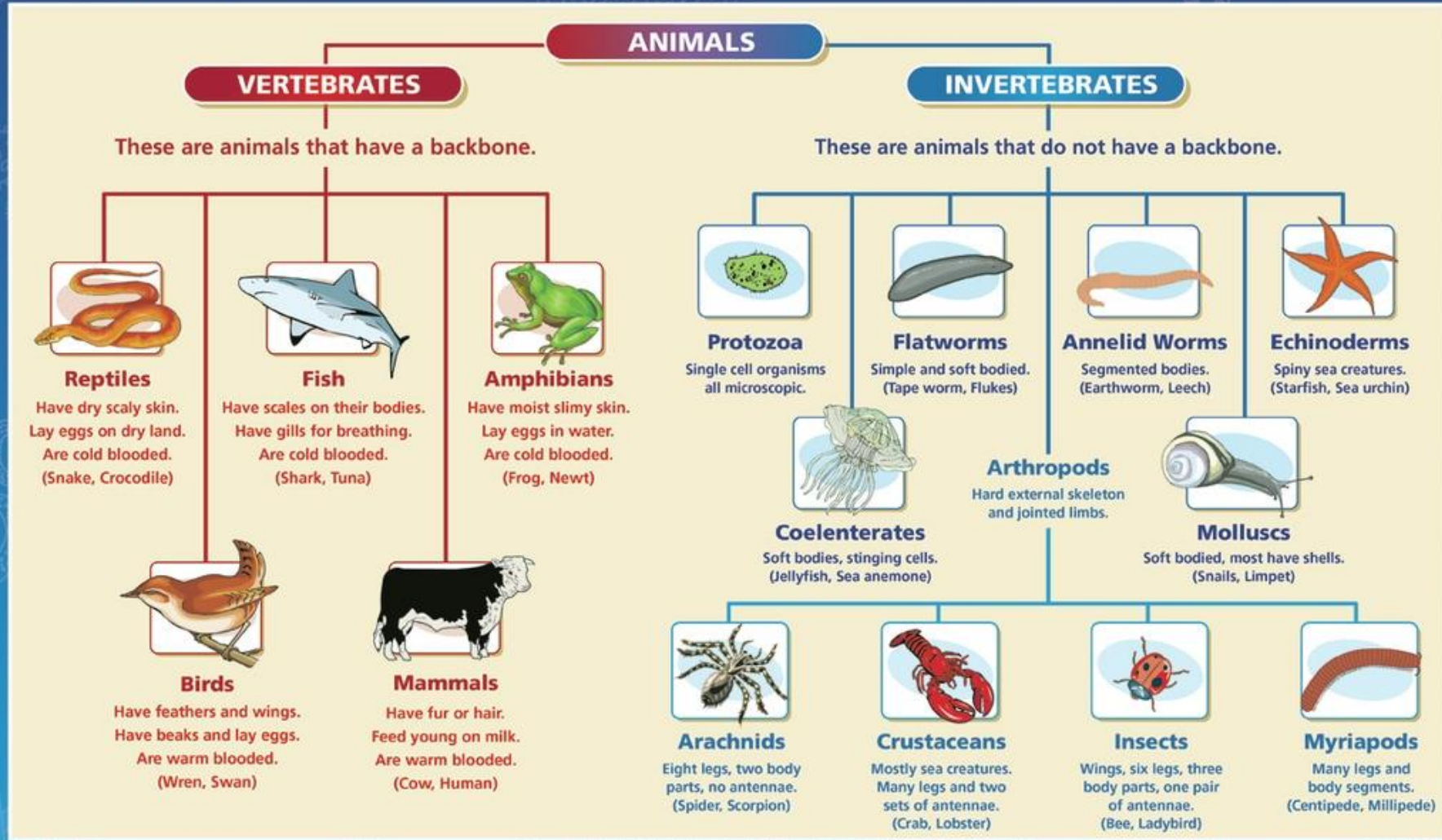


# CLASSIFICATION OF ANIMALS

This is the grouping together of animals with similar characteristics. Animals can be classed as either vertebrates or invertebrates.



# 17.1 The Linnaean System of Classification

## ► How it's organized

- Linnaean classification system has seven levels.
- Each level is included in the level above it
- Levels get increasingly specific from kingdom to species.

